

NEW JERSEY WATER UTILITY AFFORDABILITY METHODOLOGY & ASSESSMENT

RESEARCH QUESTION

How many households might struggle to afford drinking water and sewer costs without financial assistance? Where are they located?

Legend

% of Households

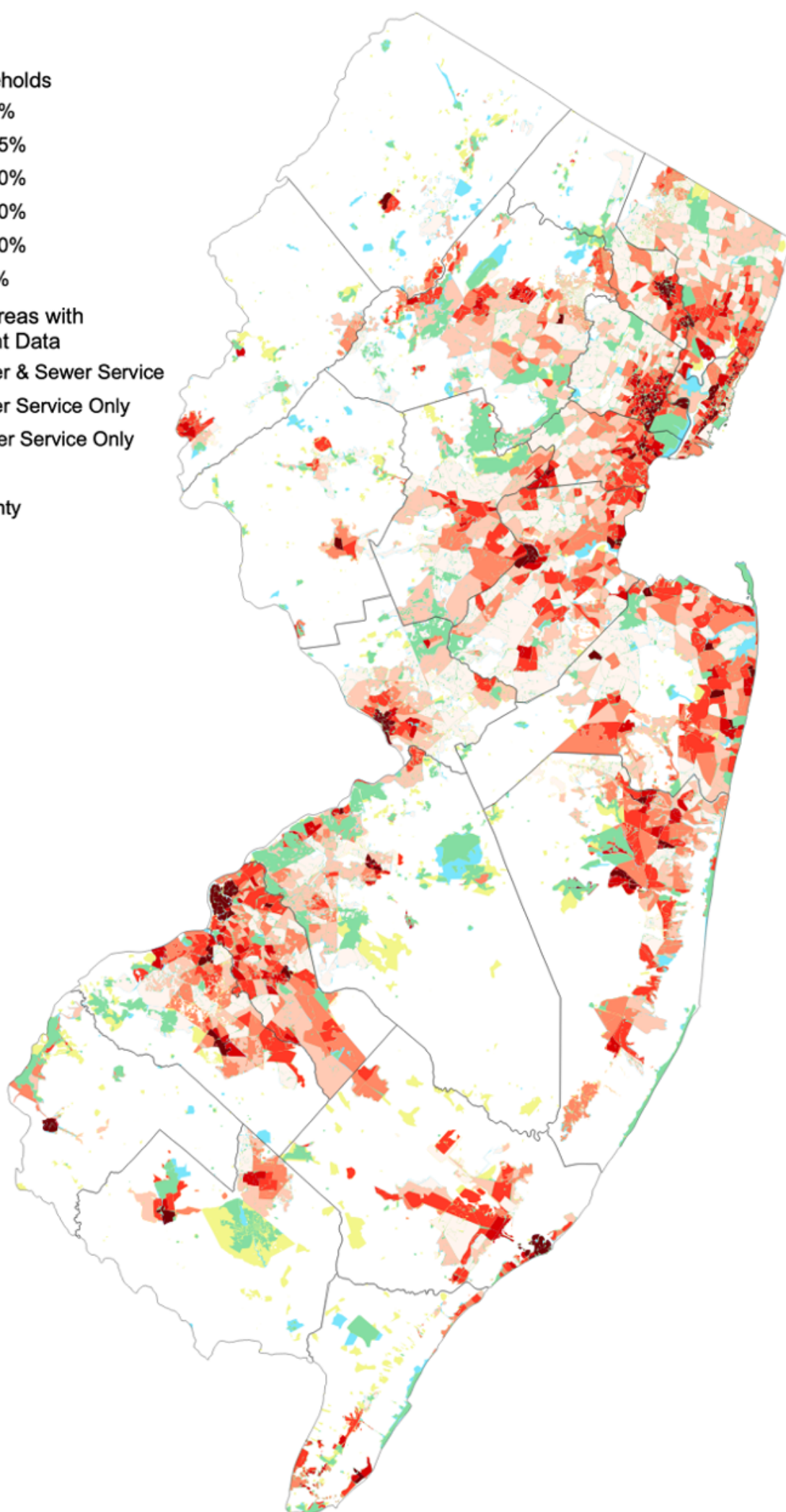
- 0-10%
- 10-15%
- 15-20%
- 20-30%
- 30-40%
- >40%

Service Areas with Insufficient Data

- Water & Sewer Service
- Water Service Only
- Sewer Service Only

Boundary

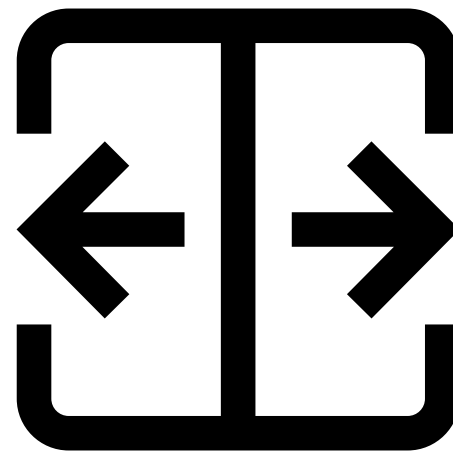
County



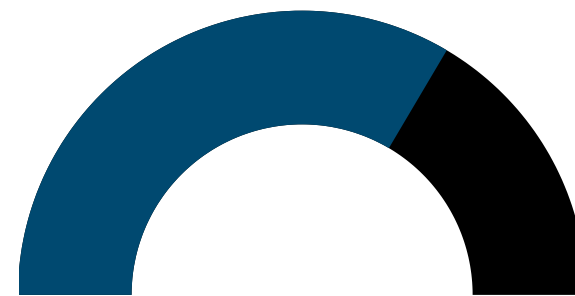
FINDINGS

Affordability stresses are not just an issue in historic urban centers, but occur in many suburban areas and rural towns.

METHODOLOGY



Divided state population by census tracts and water utility service areas, which serve 90% of the NJ population.



Determined combined water utility costs for 45,000 gallons of water demand per year. Data was collected for 90% of households with service.



Estimated household disposable income at the 20th-percentile household income for each county.



Estimated affordability stress, with 3 thresholds:

- Baseline stress: 10% of disposable income
- High stress: 20% of disposable income
- Severe stress: 30% of disposable income